

# SETTING UP SEVERESTREAMING WITH ADOBE FLASH MEDIA LIVE ENCODER (FMLE) ON WINDOWS

Updated 3/8/2014

---



As of this writing, you can download FMLE 3.2 for free at the following link:

[http://download.macromedia.com/pub/flashmediaserver/flashmedialiveencoder/installer/flashmedialiveencoder\\_3.2\\_wwe\\_signed.msi](http://download.macromedia.com/pub/flashmediaserver/flashmedialiveencoder/installer/flashmedialiveencoder_3.2_wwe_signed.msi)

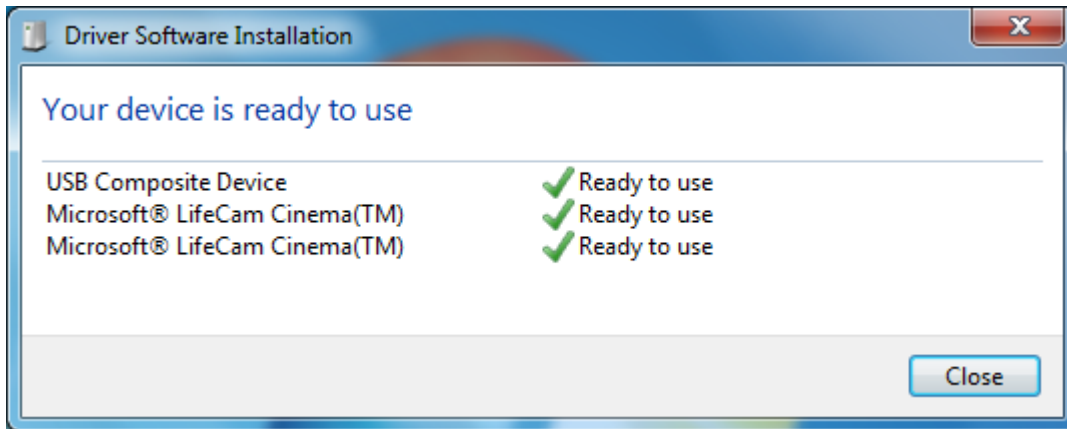
If this link fails to work, please Google “Flash Media Live Encoder Download”.

## **STEP 1**

Make sure you are using a camera with widescreen (16:9) HD format. We recommend the **Microsoft LifeCam HD** products.

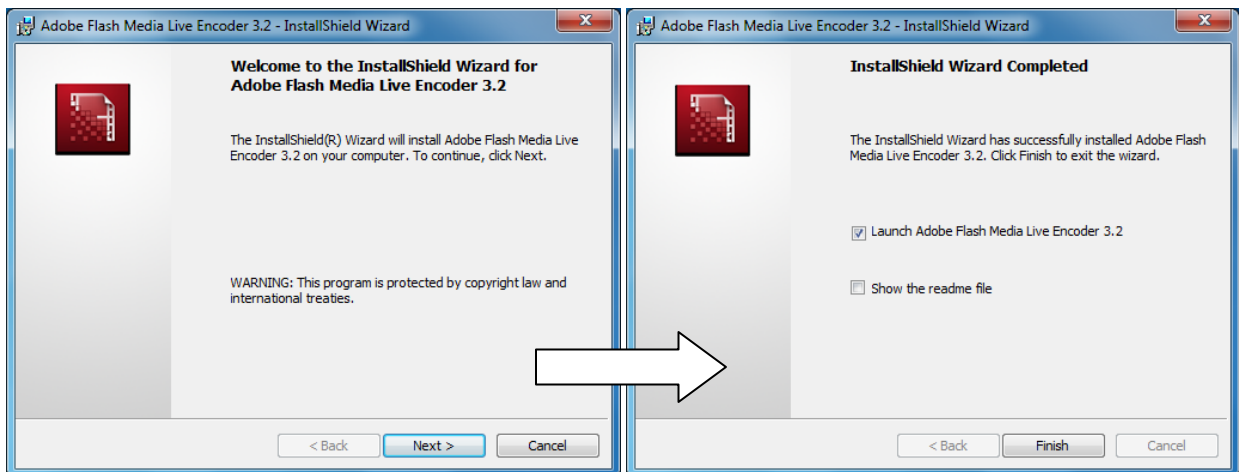
If you have a professional HD camcorder, you can use an HDMI capture card or component video converter such as the **Blackmagic Intensity** products.

Connect the camera and let the drivers install properly.



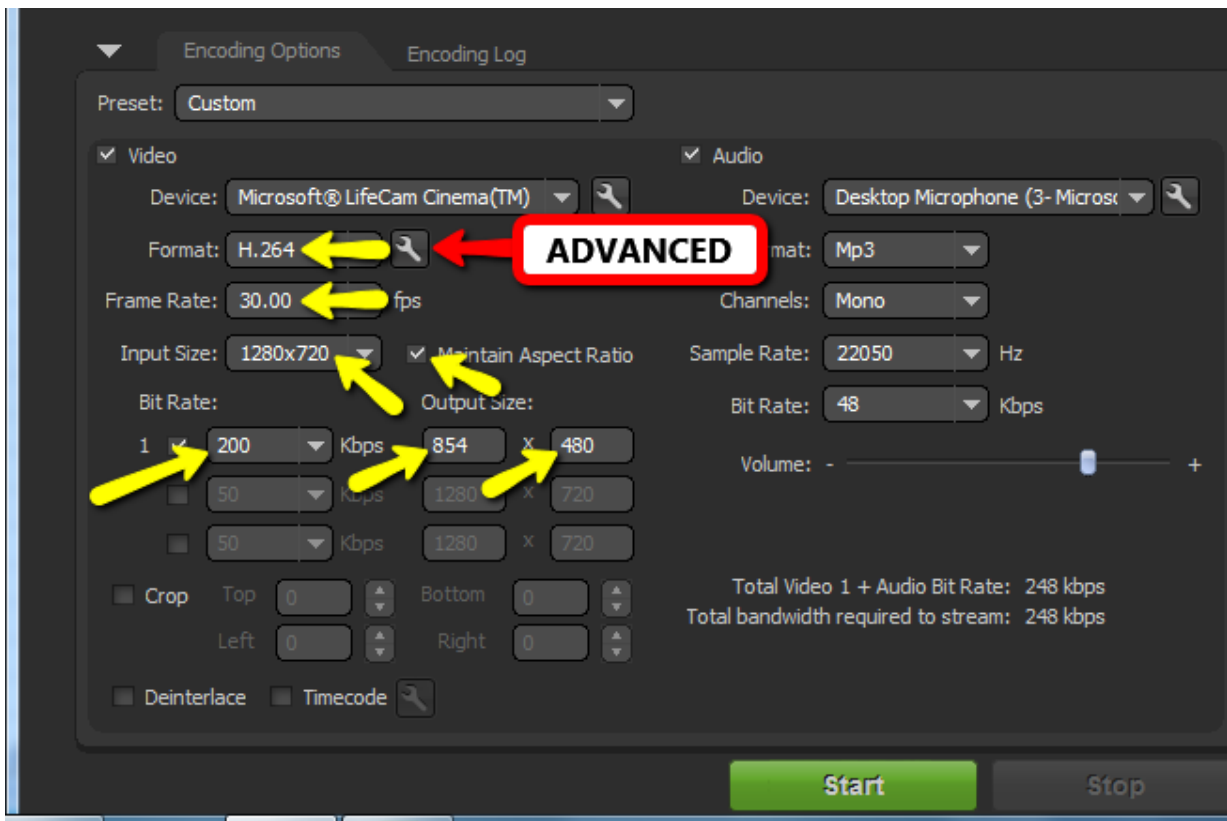
## **STEP 2**

Download and install Flash Media Live Encoder 3.2 with default settings.

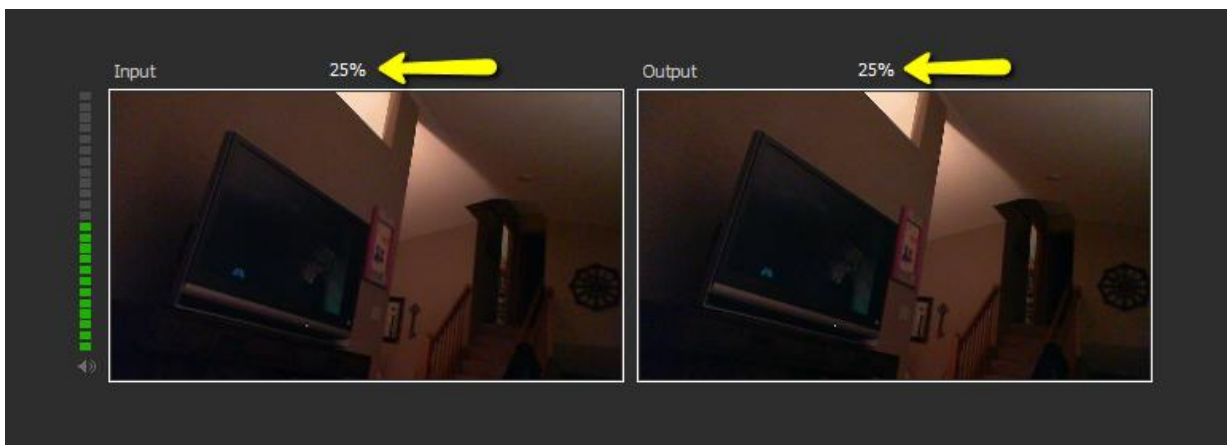


### STEP 3

Set up the VIDEO settings as shown:



When you change the Input Size, you may want to resize the Input and Output video screens so you can see the whole image:

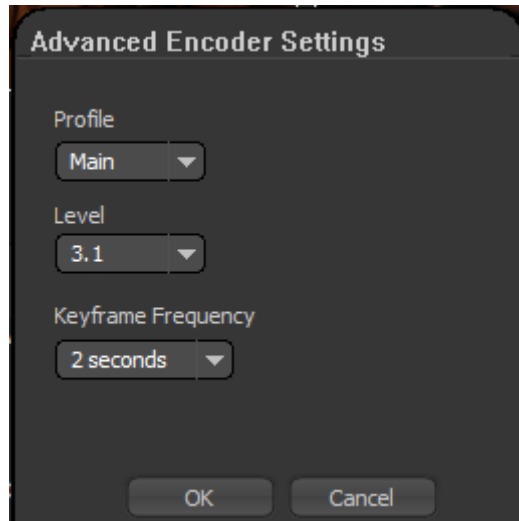




Click the “wrench” icon next to the Format chooser to open Advanced settings.

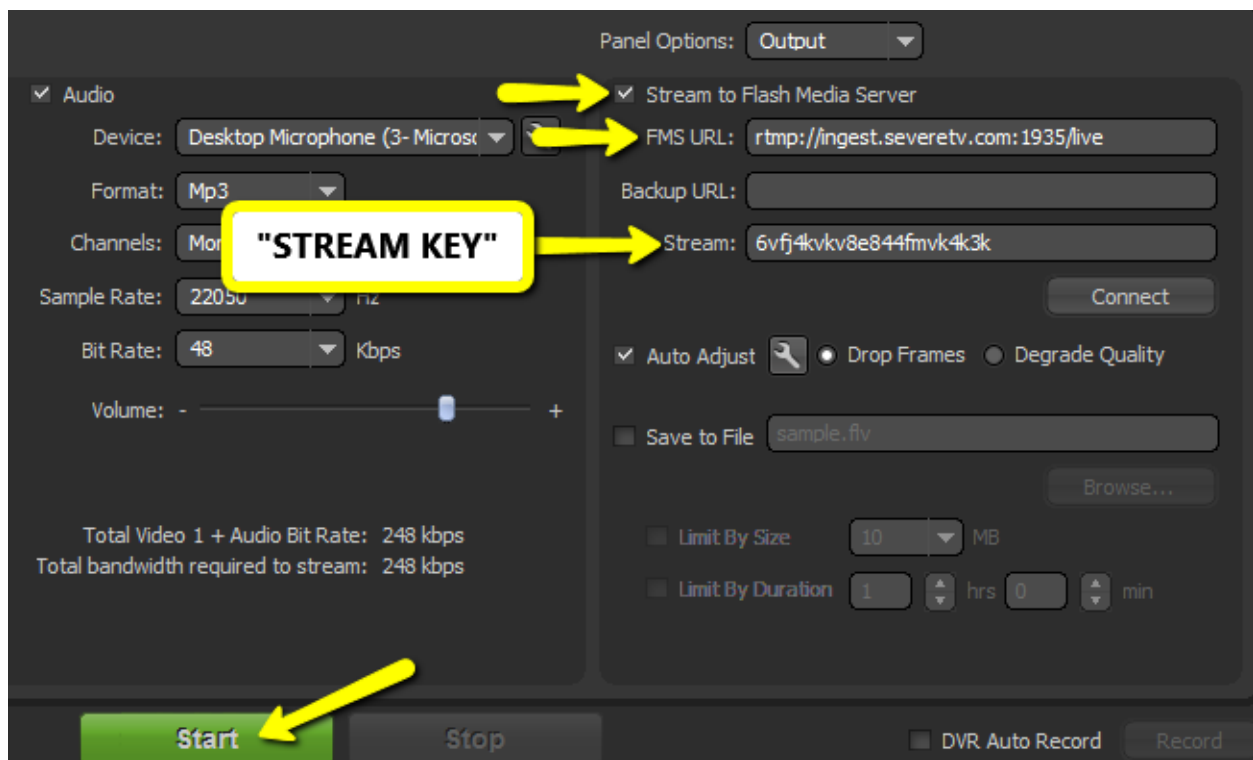
Set the options as shown:

Click “OK”.



#### **STEP 4**

Set up the OUTPUT settings as shown. The FMS URL is **rtmp://ingest.severetv.com:1935/live**  
Stream name is the “Stream Key” listed on your profile at <http://www.severestreaming.com/user>



Click “START” to begin streaming.

**(NOTE: Some people report issues if they hit the Connect button, so please try without)**

## AUDIO SETTINGS

Flash Media Live Encoder, although free, does not include the AAC Audio codec. This means, if you stream without it, your audio will not come through on most mobile devices and Apple iProducts.

To add AAC audio to your stream, you can purchase the AAC Audio Plugin from MainConcept at:

<http://www.mainconcept.com/products/plugin-ins/plugin-ins-for-adobe/aac-encoder-fmle.html>

The plugin costs \$180.00 as of this writing.

Make sure you change MP3 to AAC audio once the plugin is installed.

## SAVE YOUR WORK!


When you have everything set up properly, be sure to click the File menu and click SAVE PROFILE. You can then open that profile each time you load FMLE and save a lot of time.

## SPOTTERNETWORK INTEGRATION

For your SpotterNetwork GPS icon to change to a green camera when you are streaming, please be sure to enter your SevereStreaming username (i.e. "bob.smith") at

<http://www.spotternetwork.org/account/position>

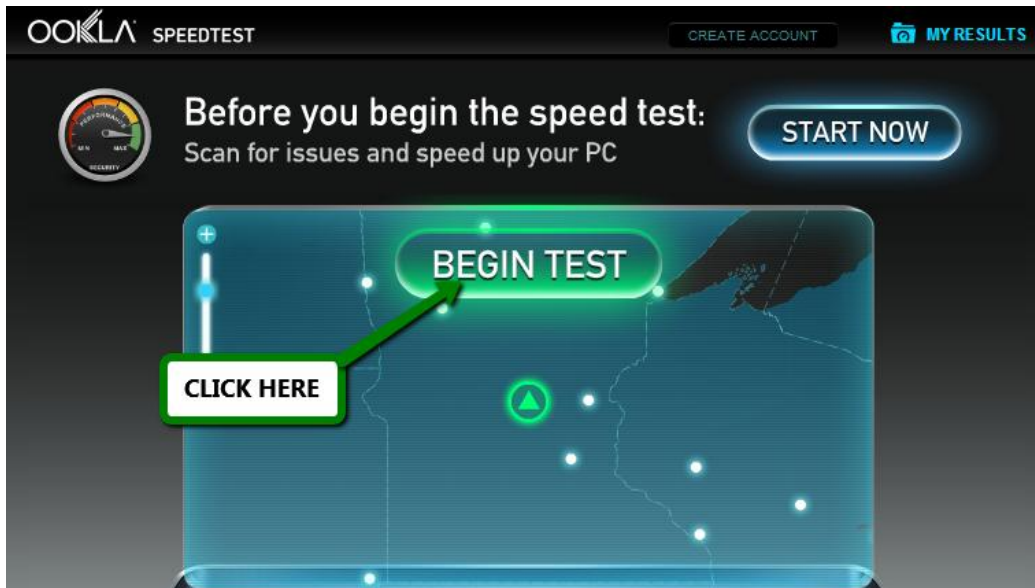
Severe Studio Users (Optional) - primarily for Storm Chasers with live video feeds		
If you have a <b>SevereStudios</b> SevereStreaming account for live video, please enter your username below. Typically this is in the format of <b>firstname.lastname</b> . You will then show up on SevereStudio's map of registered chasers.		
<b>SevereStreaming Username:</b>	<input type="text" value="kory.hartman"/>	Status: None



## A NOTE ABOUT BANDWIDTH AND BITRATE

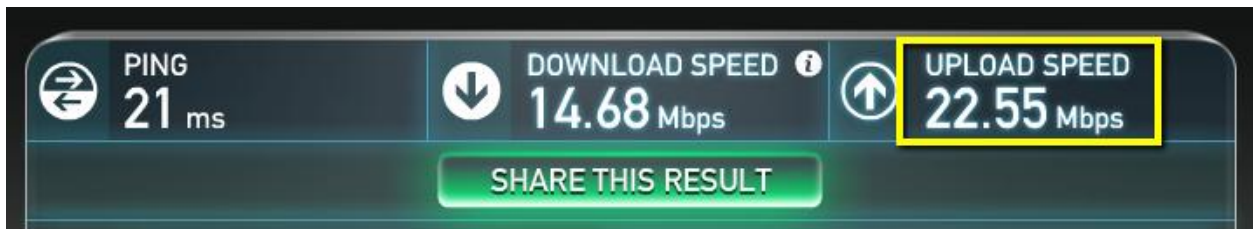
Just because you may have an account with a 500kbps bitrate limit, doesn't mean you'll always have that much upload bandwidth in the field.

Browse to: <http://www.speedtest.net> and with no other programs running, let the app load completely, then click BEGIN TEST in the green oval.



It will take a minute or so to test download and upload bandwidth. Test again if you move from a 4G/LTE data area to 3G.

Pay attention to the **upload** side of your results:



Since this was a test on home fiber internet, let's just pretend that last two numbers: **.55 Mbps** were the upload result.

Add a zero and that's roughly how much upload bandwidth you have in kbps - **550 kbps**.

**Never use more than HALF** of that for your stream so you have some headroom for spikes and wiggle room if you drive into a bad data area.

So, in this case, use **275 kbps** as your video bitrate in your encoder.

Remember, if you add audio, that will also take bandwidth. We recommend keeping audio bitrate low as possible, around 64 kbps, if you choose to use audio while streaming.

## TECHNICAL SUPPORT

For technical support, please email [support@severestudios.com](mailto:support@severestudios.com) or call 866-WX-LIVE-1.

If it is the day of a Moderate or High severe weather risk, we likely won't be able to help you with basic setup problems so please test **well in advance** of a possible chase.

## TERMS OF SERVICE

By setting up and using this encoder with SevereStreaming, you are bound by the Terms of Service as found here:

<http://www.severestreaming.com/terms-service>

©2014 SevereStudios Inc

All Rights Reserved.