

SETTING UP SEVERESTREAMING WITH OPEN BROADCASTER SOFTWARE STUDIO ON WINDOWS

Updated 4/3/2017



As of this writing, you can download OBS Studio for free at the following link:

<https://obsproject.com/download>

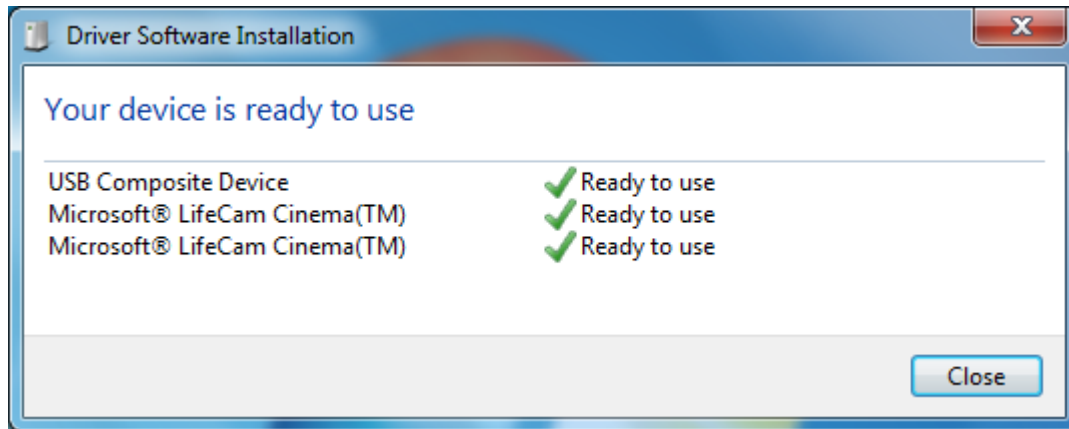
If this link fails to work, please Google "OBS Studio".

STEP 1

Make sure you are using a camera with widescreen (16:9) HD format. We recommend the **Microsoft LifeCam HD** products.

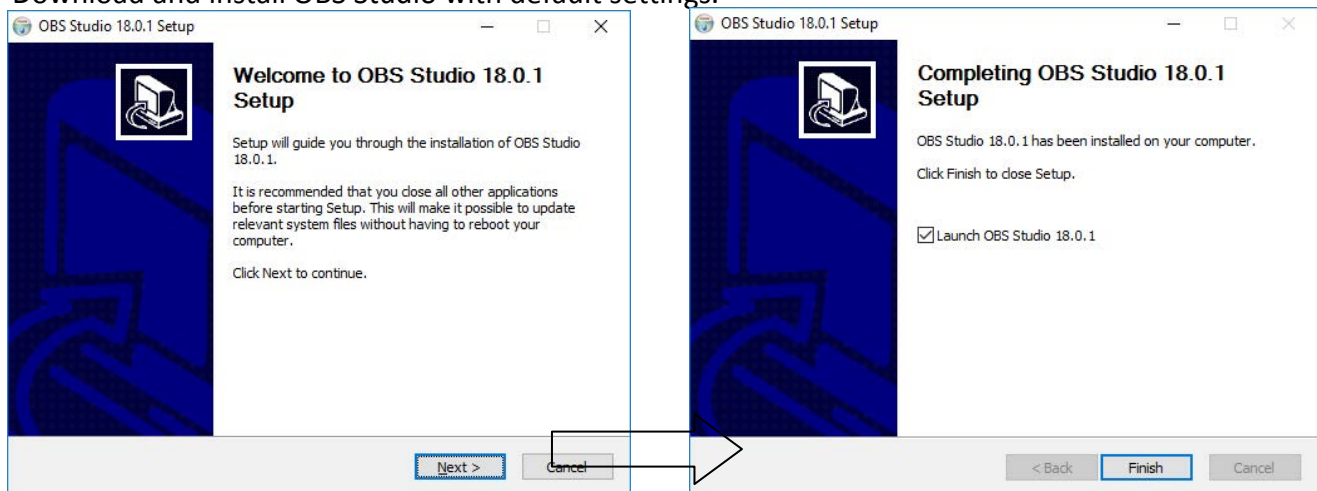
If you have a professional HD camcorder, you can use an HDMI capture card or component video converter such as the **Razer Ripsaw** or **Magewell** products.

Connect the camera and let the drivers install properly.



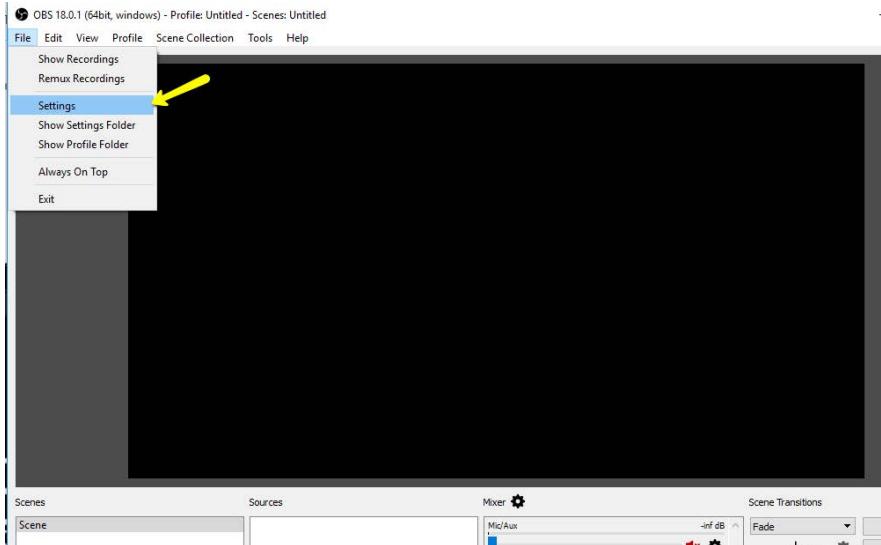
STEP 2

Download and install OBS Studio with default settings.



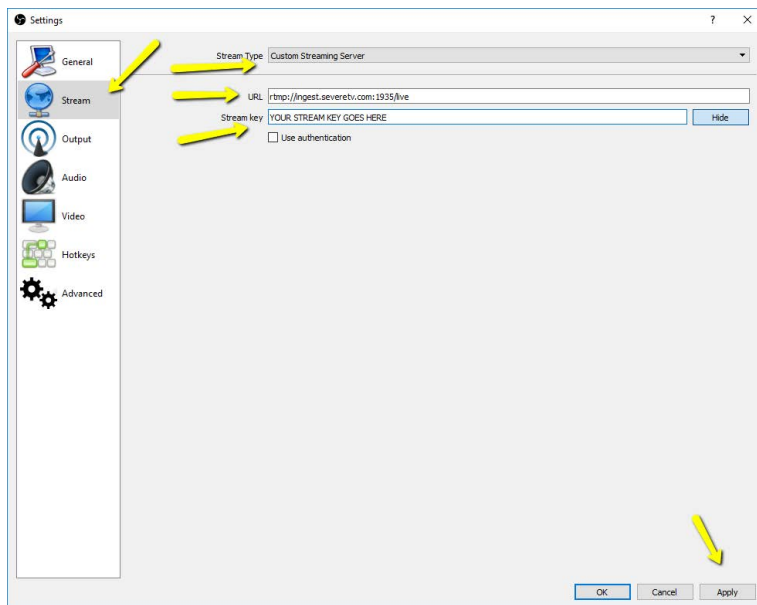
STEP 3

Go into the Settings menu as shown:



STEP 4:

Set up Stream to Custom Streaming Server Type with RTMP URL being <rtmp://ingest.severetv.com:1935/live>
Paste your stream key from your profile at <http://severestreaming.com/user>



STEP 5:

Set up the **OUTPUT** settings as shown.

VIDEO BITRATE: Will be according to your paid SevereStreaming plan and available bandwidth.

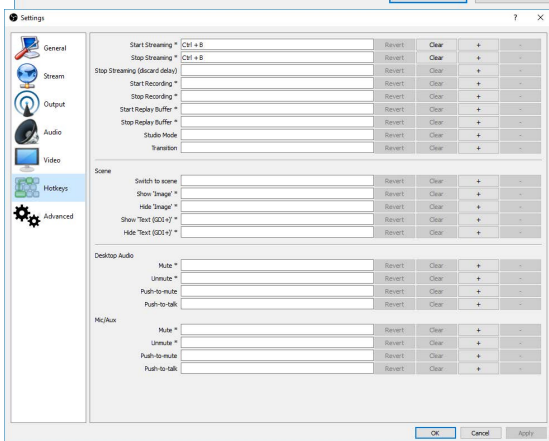
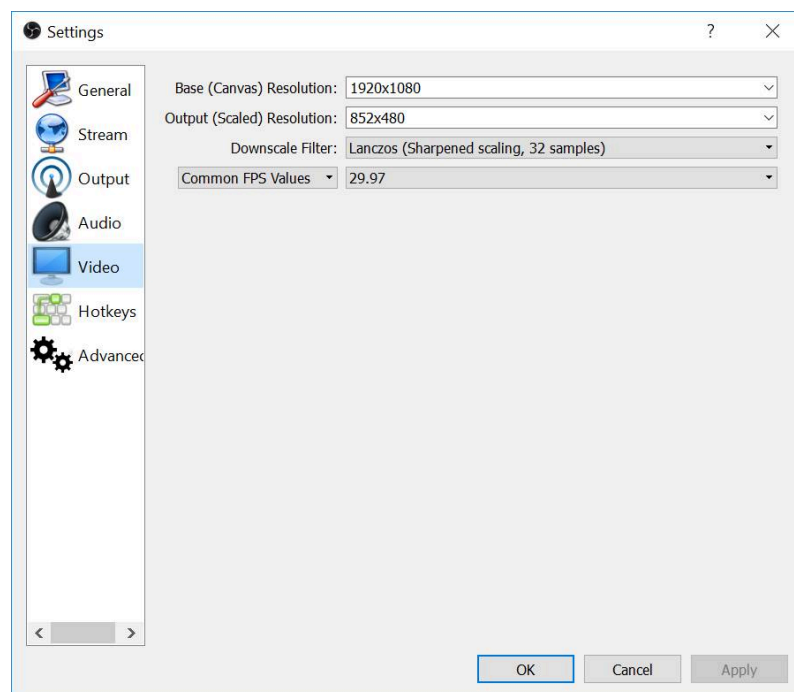
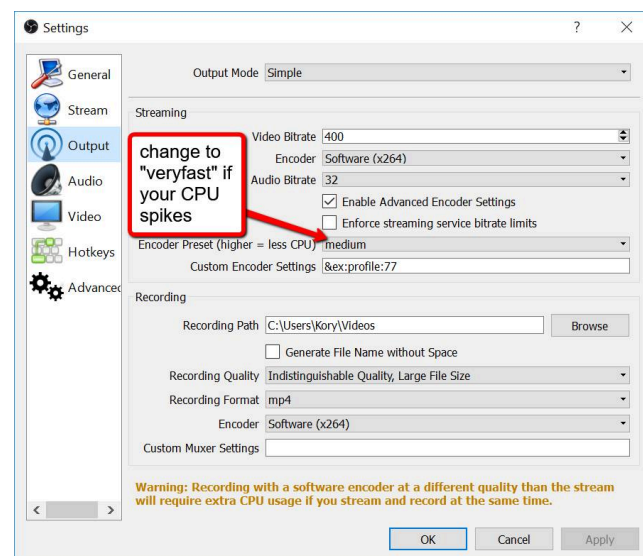
AUDIO BITRATE: This will also be as-desired.

CHECK: Enable Advanced Encoder Settings.

UNCHECK: Enforce streaming service bitrate limits.

ENCODER PRESET: Should be Medium on most HIGH VERY-HIGH-END machines (Intel i7 etc) Otherwise change to VERYFAST if you experience high CPU usage.

CUSTOM ENCODER SETTINGS: &ex:profile:77 "That's a deal that makes the video look better" - Kory Hartman



HOTKEYS:

Feel free to add Hotkeys to Start/Stop Streaming to your liking.
We like to use CTRL-B

Click "OK" to save.

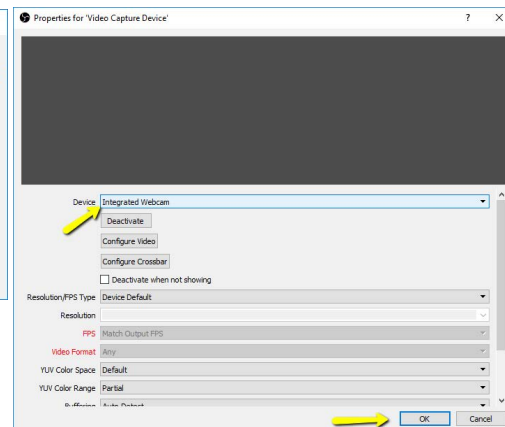
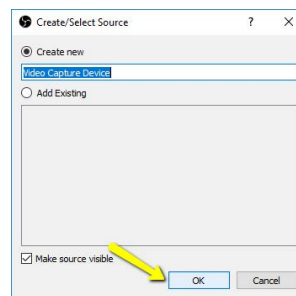
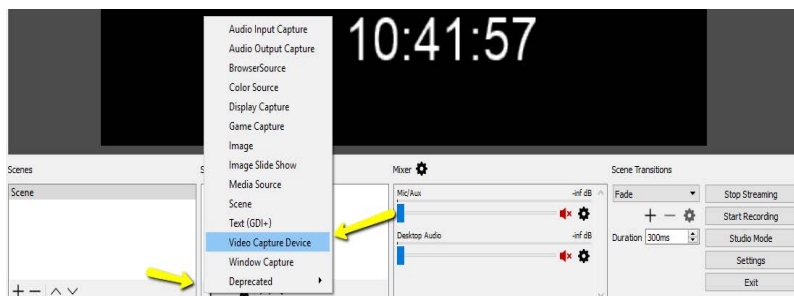
(NOTE: Adjust your Video bitrate according to your SevereStreaming plan and available mobile broadband conditions.)

You may also want to archive your footage to your local machine.

STEP 6:

Add a camera to your Scene

Click **Add** and select **Webcam** or **Game Capture** depending if you're going USB direct to a camera or connecting your camera via a video capture device (Razer Ripsaw, Elgato, Etc).



SPOTTERNETWORK INTEGRATION

For your SpotterNetwork GPS icon to change to a green camera when you are streaming, please be sure to enter your SevereStreaming username (i.e. "bob.smith") at

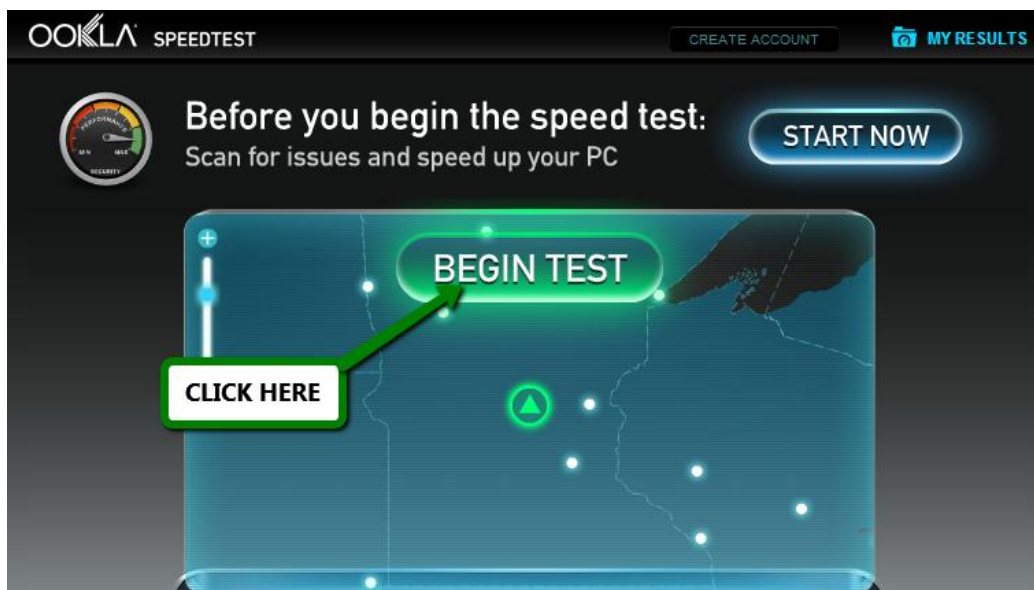
<http://www.spotternetwork.org/account/position>

Severe Studio Users (Optional) - primarily for Storm Chasers with live video feeds		
If you have a SevereStudios SevereStreaming account for live video, please enter your username below. Typically this is in the format of firstname.lastname . You will then show up on SevereStudio's map of registered chasers.		
SevereStreaming Username:	<input type="text" value="kory.hartman"/>	Status: None

A NOTE ABOUT BANDWIDTH AND BITRATE

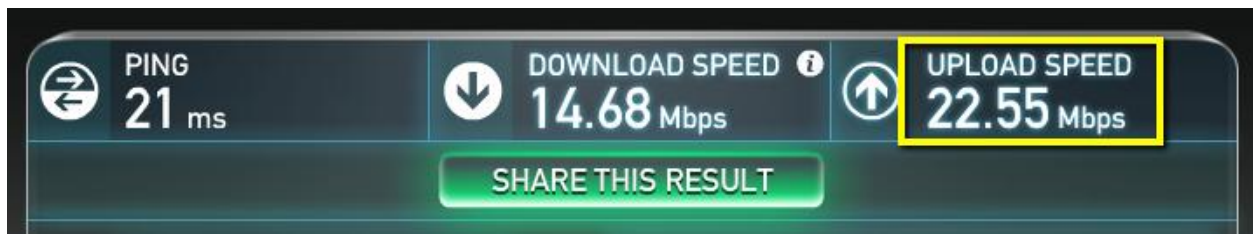
Just because you may have an account with a 500kbps bitrate limit, doesn't mean you'll always have that much upload bandwidth in the field.

Browse to: <http://www.speedtest.net> and with no other programs running, let the app load completely, then click BEGIN TEST in the green oval.



It will take a minute or so to test download and upload bandwidth. Test again if you move from a 4G/LTE data area to 3G.

Pay attention to the upload side of your results:



Since this was a test on home fiber internet, let's just pretend that last two numbers: **.55 Mbps** were the upload result.

Add a zero and that's roughly how much upload bandwidth you have in kbps - **550 kbps**.

Never use more than HALF of that for your stream so you have some headroom for spikes and wiggle room if you drive into a bad data area.

So, in this case, use **275 kbps** as your video bitrate in your encoder.

Remember, if you add audio, that will also take bandwidth. We recommend keeping audio bitrate low as possible, around 64 kbps, if you choose to use audio while streaming.

TECHNICAL SUPPORT

For technical support, please email support@severestudios.com or call 866-WX-LIVE-1. If it is the day of a Moderate or High severe weather risk, we likely won't be able to help you with basic setup problems so please test well in advance of a possible chase.

TERMS OF SERVICE

By setting up and using this encoder with SevereStreaming, you are bound by the Terms of Service as found here:

<http://www.severestreaming.com/terms-service>

