



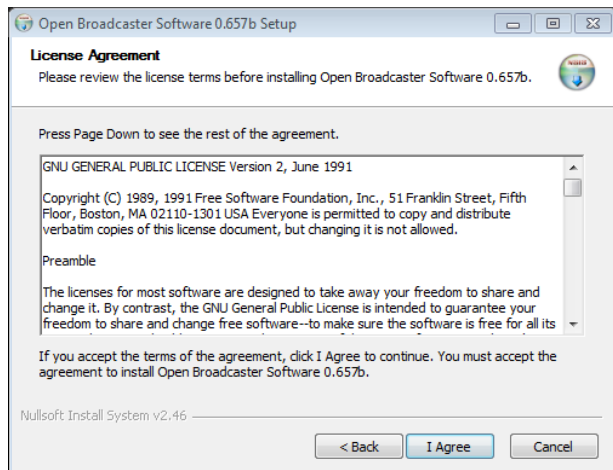
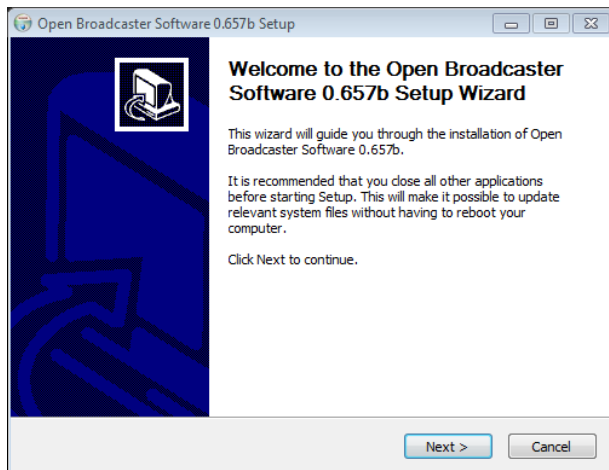
SevereStreaming with OBS (Open Broadcaster Software)

“Classic” Version 0.657

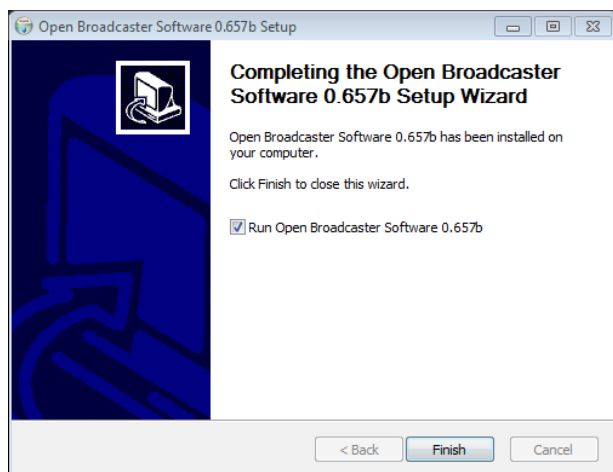
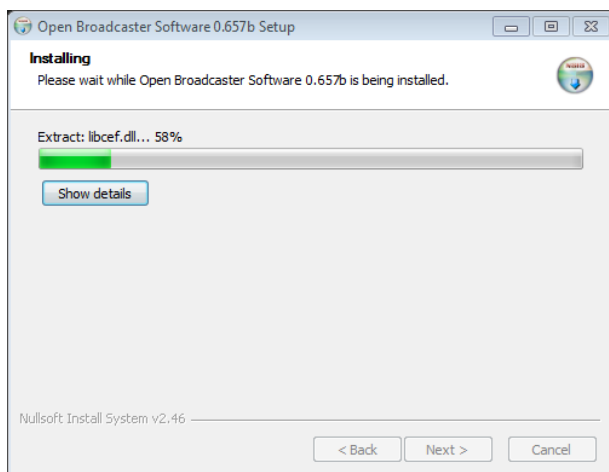
Updated: 4/3/16

Step 1

Download and install OBS Classic. As of this writing, OBS Classic can be installed from <https://obsproject.com/>

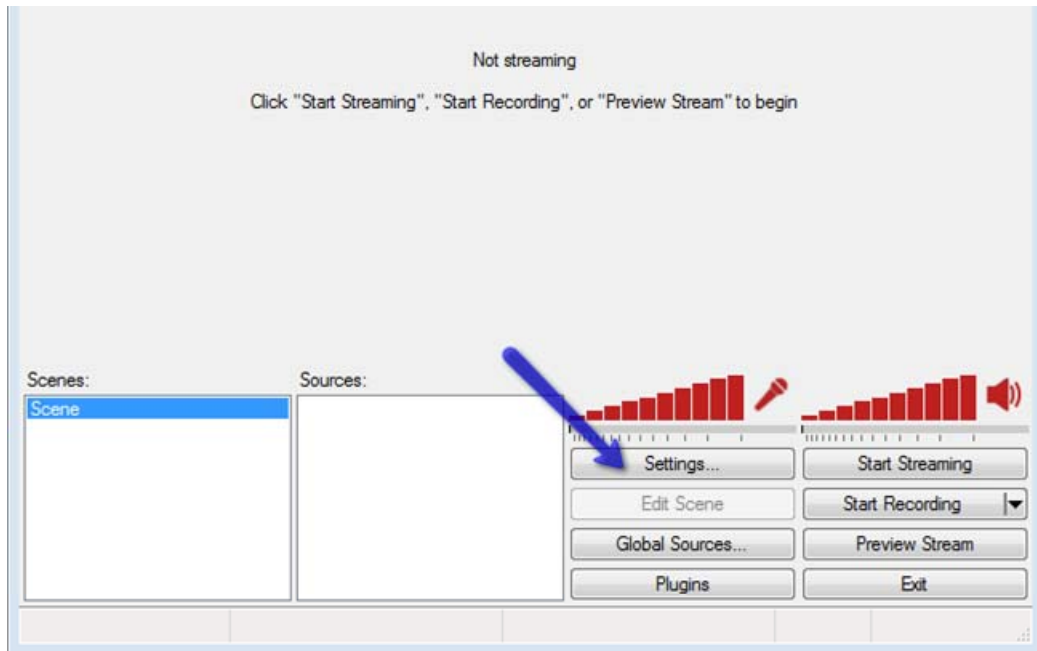


Click **Next**, **I Agree**, **Finish**.



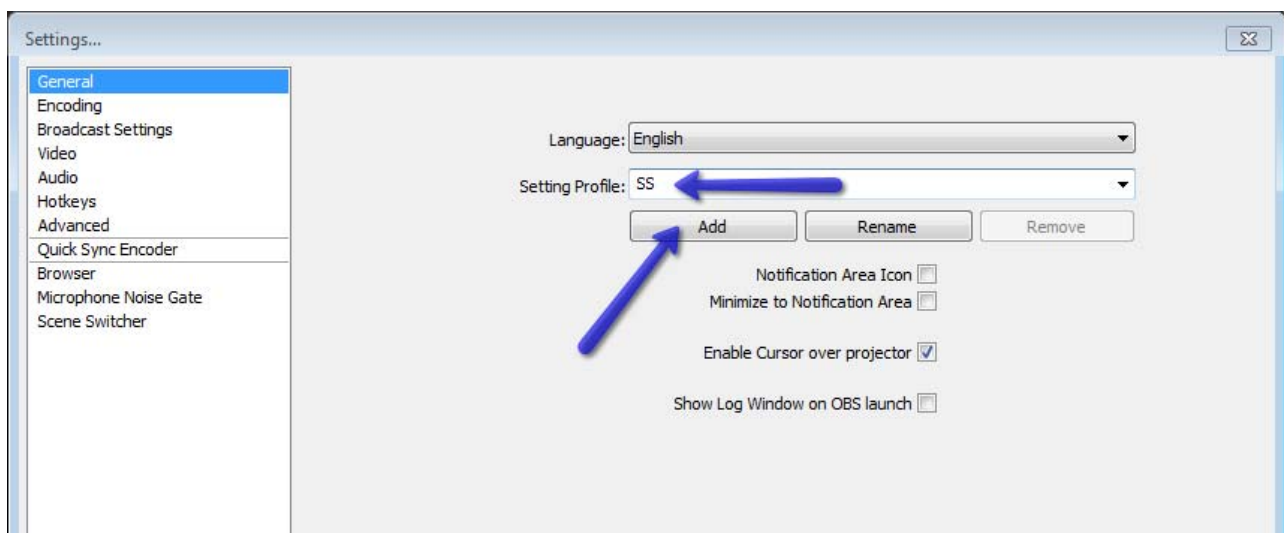
Step 2

When OBS is installed and opens, click **Settings**.



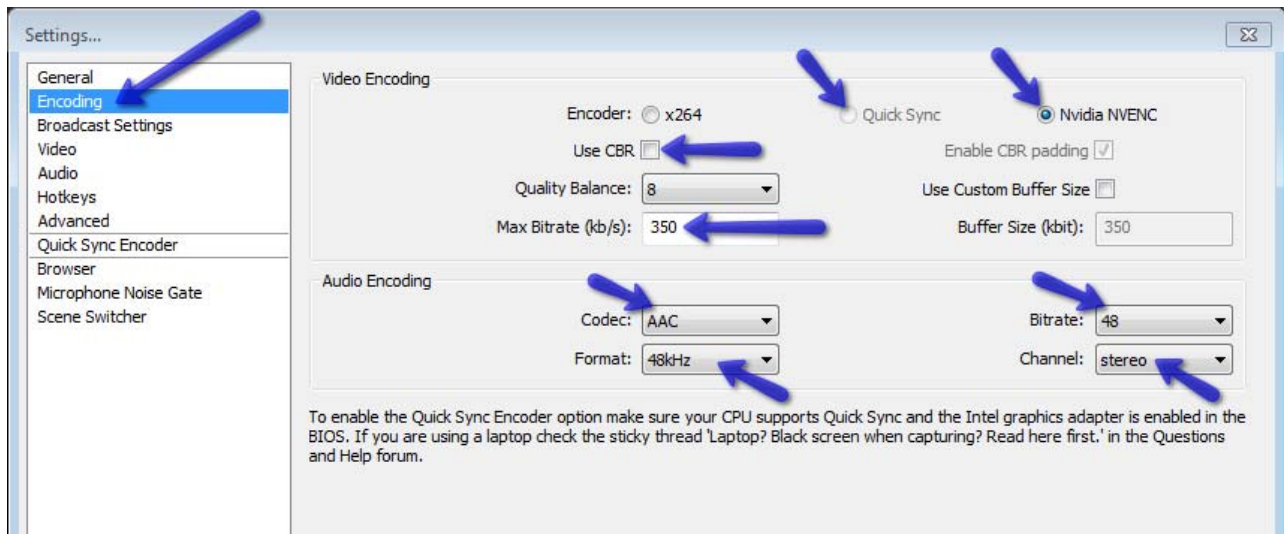
Step 3 – General

Add a Profile and call it "SS".



Step 4 – Encoding

Click Encoding on the left, and set settings as shown:



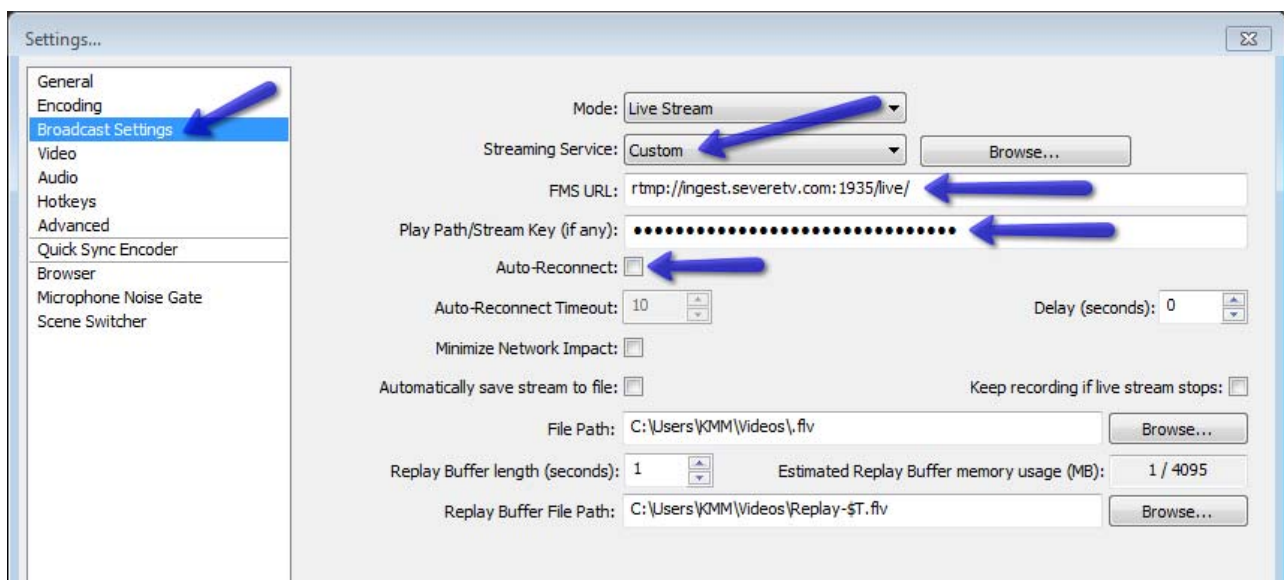
DO NOT USE “x264”.

Only use H.264 (Available in Quick Sync or Nvidia NVENC). If x264 is the only option available to you, **STOP** and choose a different encoder.

If you can choose Quick Sync or Nvidia NVENC, please move on to the next step.

Step 5 – Broadcast Settings

Click Broadcast Settings on the left, choose **Custom**, type in the FMS URL, and paste in your Stream Key (from your severestreaming.com profile). Uncheck Auto-Reconnect. Manual reconnect works better with OBS Classic.



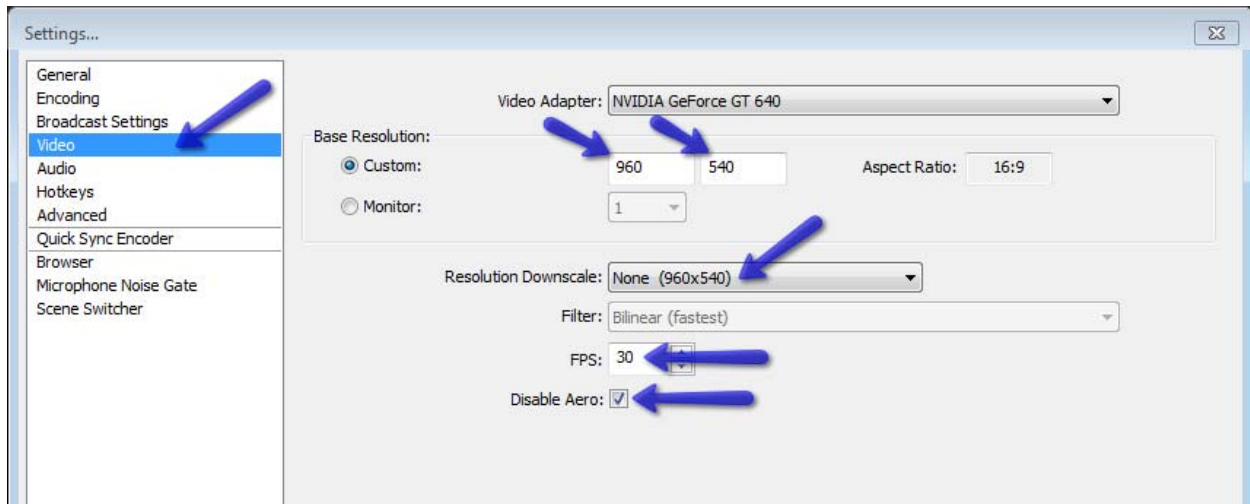
Step 6 – Video

Choose a Resolution (stream size in pixels). Only use the options listed below or your stream won't be viewable on all mobile devices:

640x360

960x540 (recommended)

1280x720 – *This resolution only recommended if you have very new laptop with Intel i7 processor, 8GB RAM, and at least 2GB dedicated video RAM.*



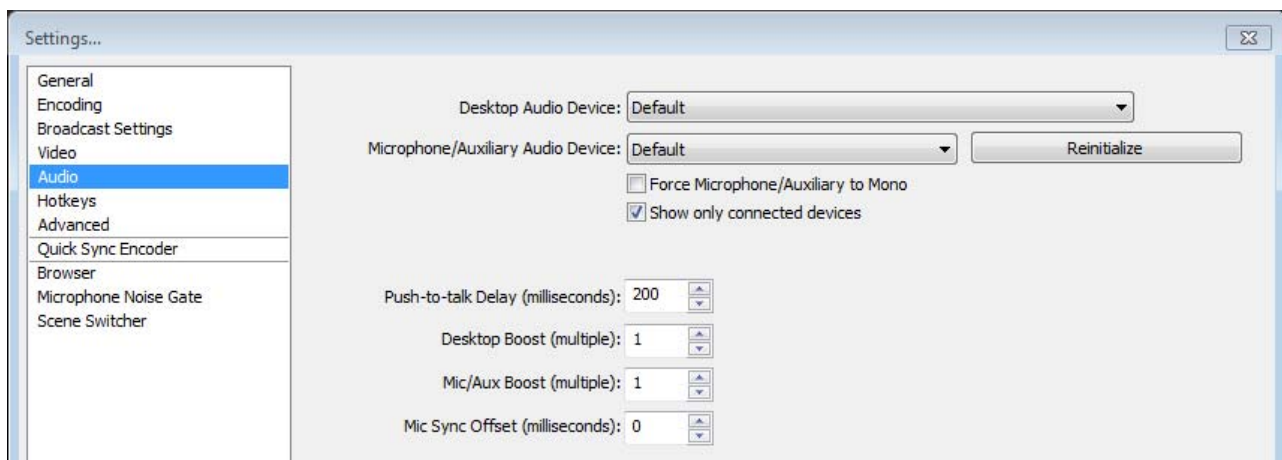
Downscale – **None**.

30 FPS (Frames Per Second) recommended. This can be dropped to 15 if you experience issues.

Disabling “Aero” on Windows machines will help with video rendering.

Step 7 – Audio

Set settings as needed for your hardware. You can run audio on your stream, but we do not give tech support for setting this up since there are so many different audio devices available.

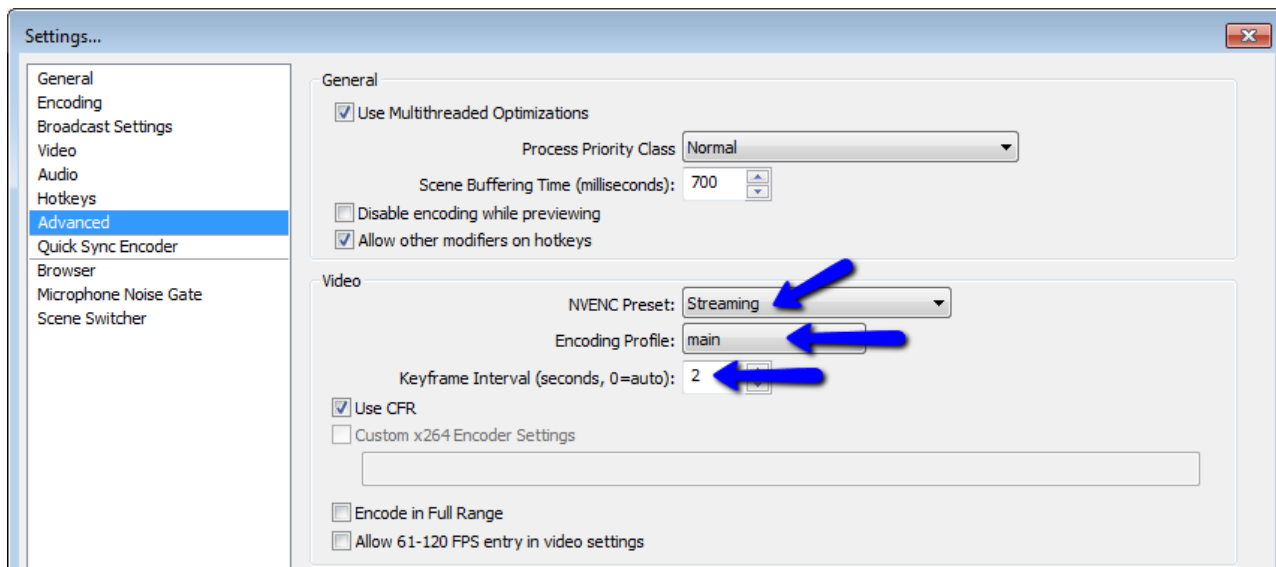


Step 8 – Advanced

If your Encoder allows Presets, choose one that says “**Streaming**” or something similar.

Choose Encoding Profile: **Main**

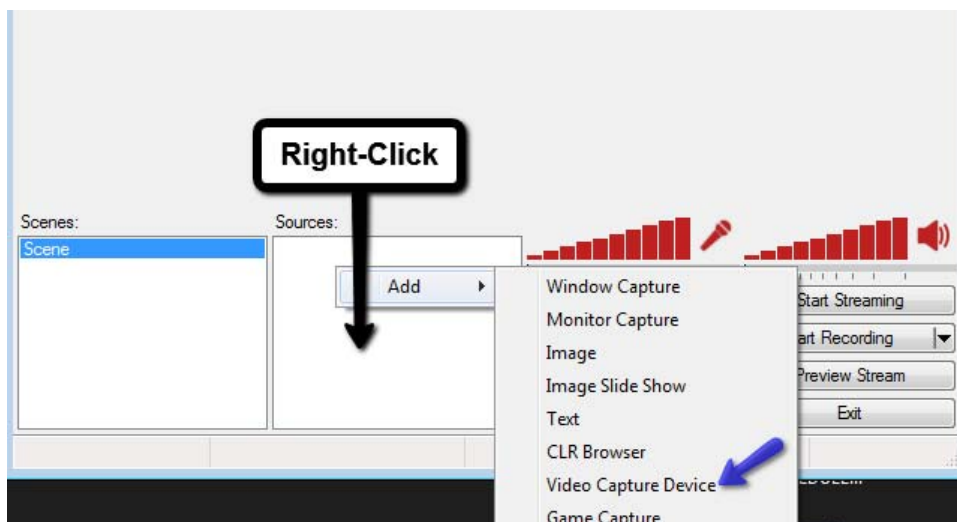
Keyframe should be every **2** seconds.

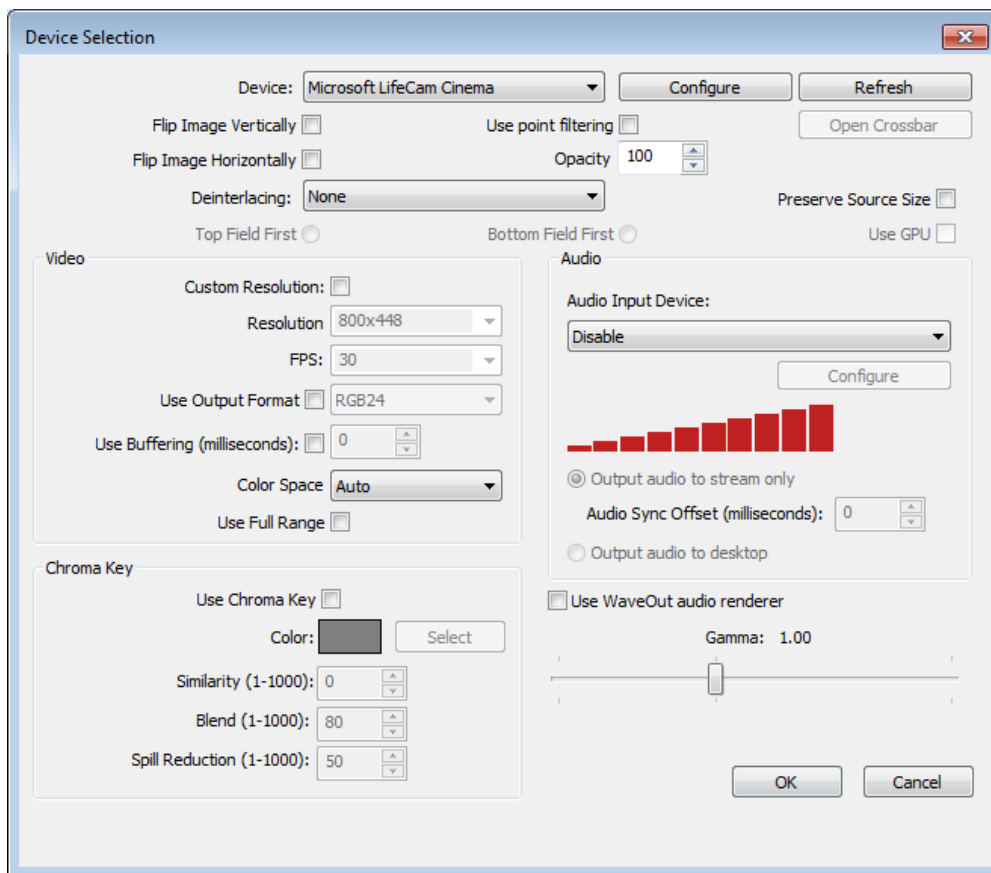


Click **Apply** and **OK**.

Step 9 – Add Source

Right-click in Sources box... Add a **Video Capture Device** (or possibly Game Capture, depending on your hardware).

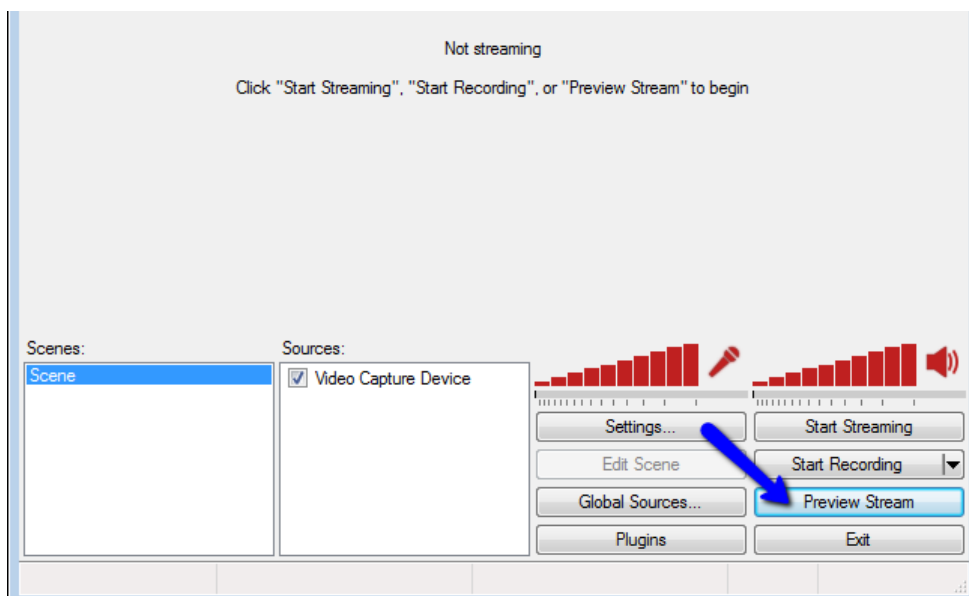




You shouldn't really need to change any settings here. Click **OK**.

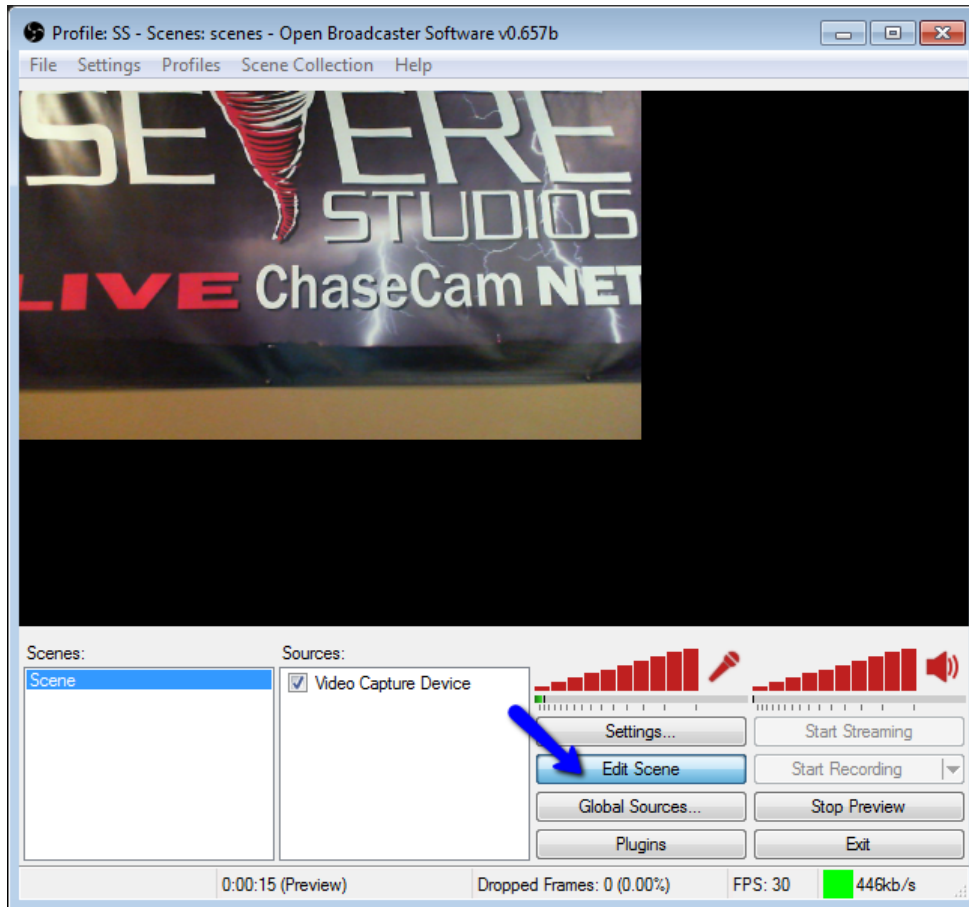
Step 10 – Preview Stream

Click the **Preview Stream** button to take a look at your settings and scene.

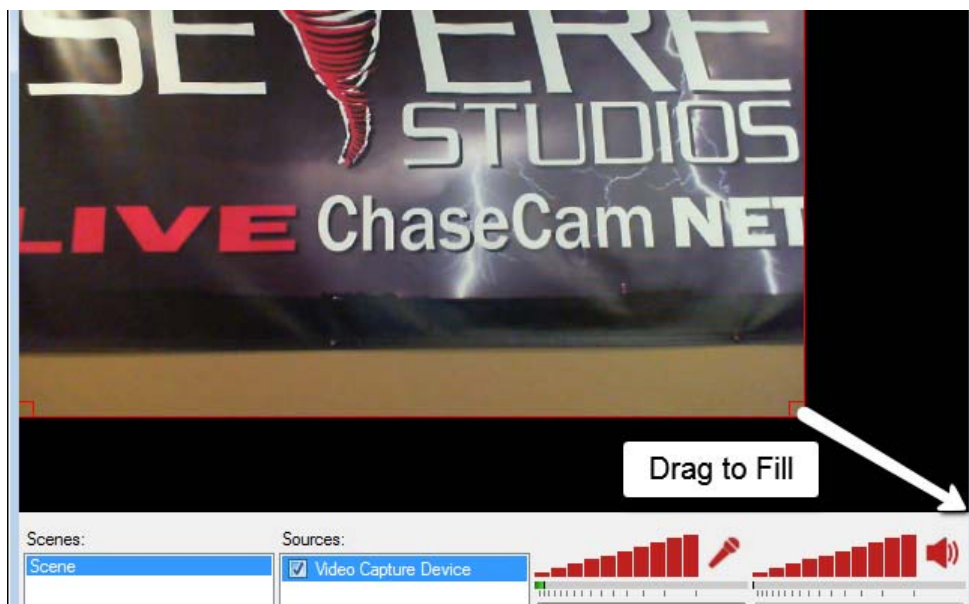


Step 11 – Edit Scene

If your video source is not filling the box, click the Edit Scene button.



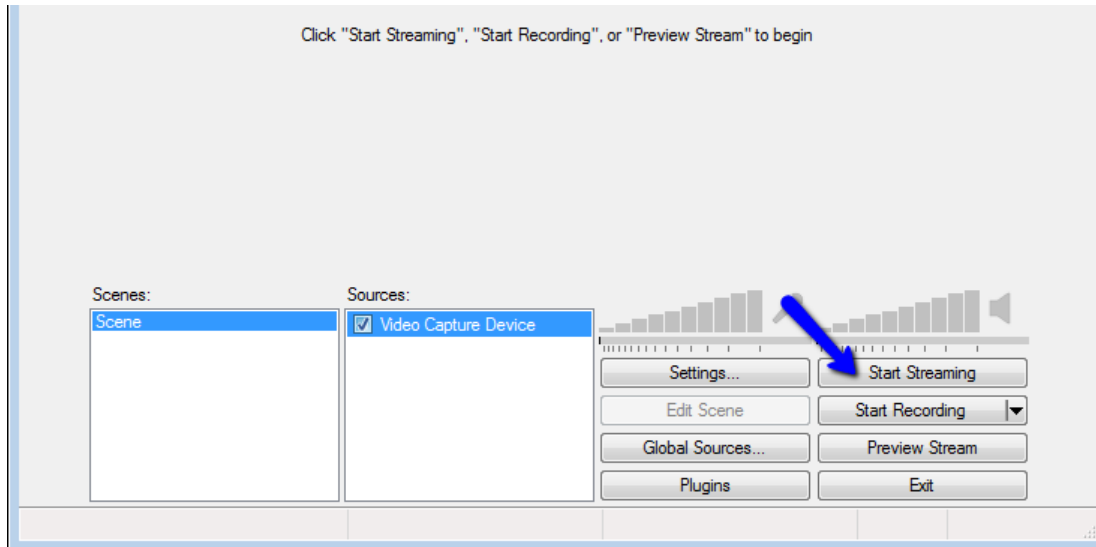
Drag the corner of the video input down and right until it fills the scene.



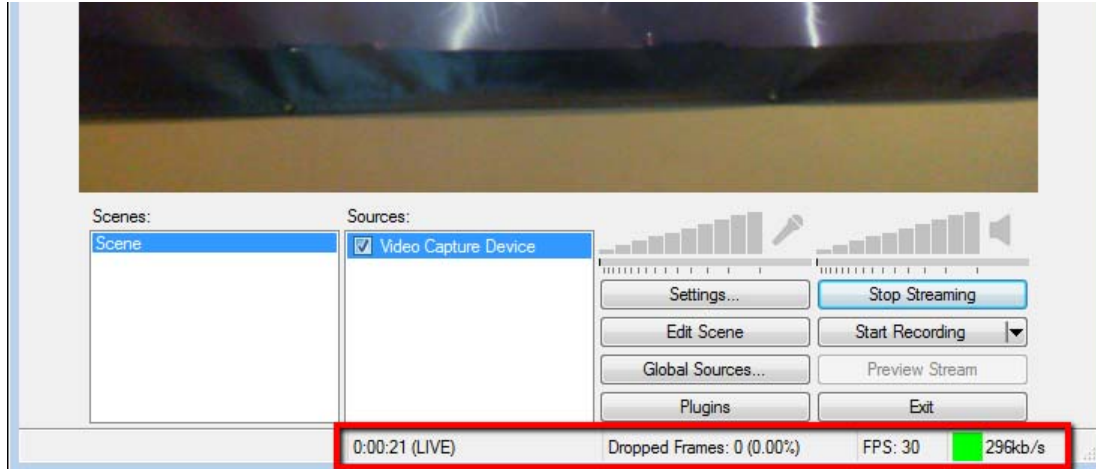
Step 12 – Start Streaming

If you are still previewing, you can click **Stop Preview**.

To begin streaming to SevereStudios, click **Start Streaming**.



You will see helpful statistics at the bottom of OBS about your stream.



If you see a large number of Dropped Frames, you should immediately stop streaming and check your settings.

Try decreasing your video Resolution or Frames Per Second rate (FPS) as shown in Step 6).

For further help, paid streamers can contact us for assistance. support@severestudios.com